

Infrastructure Facilities

Physical Facilities

The University situated in sprawling campus of 245 acres, at the foot hills of Western Ghats in a green and scenic environment with a constructed area of 15,75,000 square feet, provides comfortable and inspiring environment for the students with all necessary amenities. Class rooms are furnished with adequate seating arrangements and are equipped with modern ICT facilities, including SMART boards, audio-visual teaching aids, computers and LCD projectors. The University has adequate physical infrastructure for conducting all the academic and supporting activities as per UGC/AICTE norms.



Aerial view of the Kalasalingam University Campus



TIFAC CORE in Network Engineering



Biotechnology Block



Information Technology Block

Details about major buildings are given below:

| S.No : | NAME OF THE BUILDING | PLINTH AREA (Sq. ft) |
|--------|--------------------------------|----------------------|
| 1 | Block-I (3 Floors) | 13,500 |
| 2 | Block-II (3 Floors) | 24,000 |
| 3 | Block-III (3 Floors) | 15,000 |
| 4 | Block-IV (3 Floors) | 16,300 |
| 5 | Block-V (4 Floors) | 82,000 |
| 6 | Biotechnology Block (3 Floors) | 80,000 |
| 7 | TIFAC-CORE Block (3 Floors) | 1,10,000 |
| 8 | P.G. Block | 10,500 |
| 9 | Computer Block | 22,500 |
| 10 | Computer Centre | 13,000 |
| 11 | A-Block (7 Floors) | 1,53,000 |
| 12 | B-Block (4 Floors) | 78,000 |
| 13 | Auditorium (2 Floors) | 18,000 |
| 14 | Indoor Stadium (3 Floors) | 26,000 |
| 15 | Guest House (3 Floors) | 46,000 |
| 16 | Students Canteens | 20,500 |
| 17 | Students Health Centre | 13,000 |
| 18 | Mineral Water Plant (RO Plant) | 1,000 |
| 19 | Amenity Block | 5,000 |
| 20 | Workshops & Labs | 32,000 |
| 21 | Staff Quarters I (3 Floors) | 7,200 |
| 22 | Staff Quarters II (3 Floors) | 9,000 |
| 23 | Staff Quarters III (IV Floors) | 11,500 |
| 24 | Girls Hostel –I (4 Floors) | 70,000 |
| 25 | Girls Hostel –II (4 Floors) | 90,000 |
| 26 | Girls Hostel –III (9 Floors) | 2,60,000 |
| 27 | P.G. Hostel (3 Floors) | 84,000 |
| 28 | Boys Hostel-I (4 Floor) | 90,000 |
| 29 | Boys Hostel-II (4 Floor) | 93,000 |
| 30 | Boys Hostel –III (5 Floor) | 1,58,830 |
| 31 | Boys Hostel 1 Annexe (5 Floor) | 83,000 |
| 32 | Boys Hostel 2 Annexe (5 Floor) | 70,000 |
| 33 | Waste Water Treatment Plant | 8,000 |
| 34 | Vice Chancellor Bungalow | 6,200 |

A separate water purification plant (RO) is installed in the campus to ensure supply of protected water to all the buildings including hostels. All the buildings are also provided with electric power generator facilities for backup power supply. A total capacity of 1500 KVA generators are available for this purpose.

Infrastructure for academic activities:

The following academic blocks are available for catering to the individual department needs.

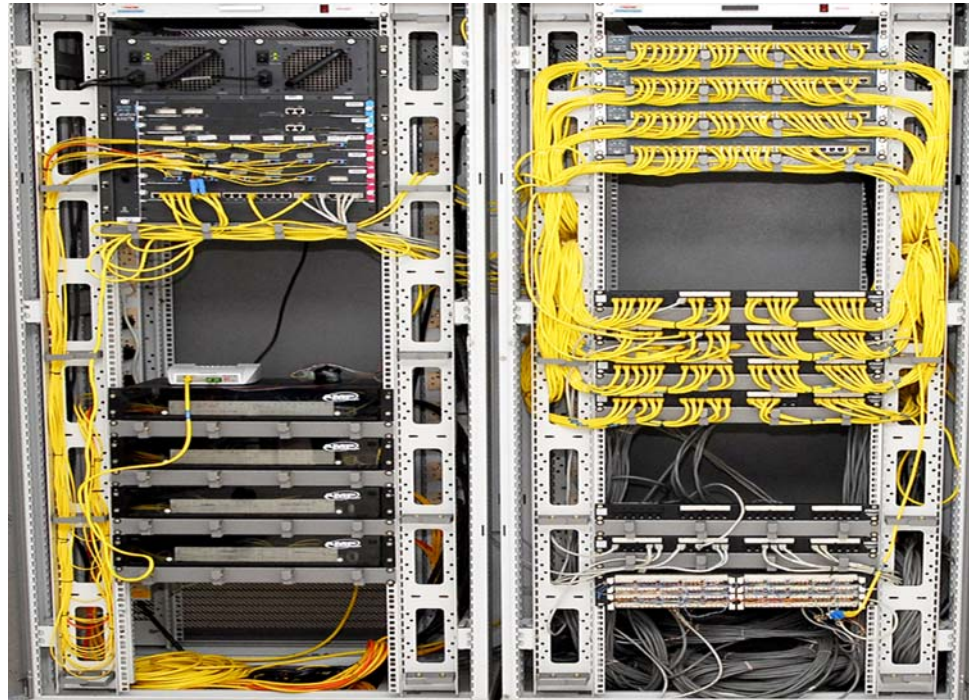
1. Biotechnology Block
2. Block –I
3. Block – II
4. Block – III
5. Block – IV
6. Information Technology Block
7. TIFAC CORE Building
8. A Block
9. B Block
10. PG Block

All academic blocks houses class rooms, seminar rooms, labs, department library, staff rooms and rest rooms for students. Individual classes get separate class rooms with all ICT facilities.

In addition to academic blocks, two air conditioned seminar halls with a total seating capacities of about 500 and one air conditioned auditorium with a seating capacity about 1000 are available for the conduct of conferences and seminars. This is in addition to the seminar halls of 250 capacities available with each Department. The University also has a centralized library to cater the needs of the students and department level libraries to cater the departmental needs. All the academic blocks are having the “Rest rooms” for boys and girls.

Campus wide networking is available in the campus. All the buildings are connected through gigabit optical fibers. Central server farm with blade servers and 11 terabyte

storage is available for use of staff and students. Individual logins are available for all the students and staff for accessing central computing facilities.



Campus Wide Networking with fiber optic backbone

Wi-Fi facility is also available in the campus in addition to the internet access facility with dedicated 34 Mbps bandwidth (24 Mbps through microwave link (Reliance) and additional 10 Mbps bandwidth through fiber (BSNL)). University has Video conferencing facility for interaction with foreign universities and industry experts. The university also has EDUSAT connection to receive leaning resources.

All computer labs are having UPS facilities with sufficient backup and a total capacity of 500 KVA UPS capacity are available.

Infrastructure for Co-curricular activities:

The institution has separate buildings / rooms for performing the following Co-curricular activities and extra curricular activities. NCC, NSS programmes, Fine Arts association and individual department associations. 3 air conditioned seminar halls, one air conditioned Auditorium and one Open air theater with seating capacities varying from 200 – 1500 are available for conducting cultural events. There is also an Indoor stadium for indoor games and conducting Yoga classes.



Dr.K.S.Krishnan Auditorium

Infrastructure for Sports

Kalasalingam University has excellent infrastructure for sports including

- State of Art 8 tracks play ground (As per Sports Authority of India's standard)
- Indoor Stadium with built-in residential facilities for sports persons
- Modern GYM for both Boys and Girls
- Separate play ground for all major games with flood light facilities

| Sl. No. | Description | Details | |
|---------------|---------------------------------------|-------------------------------------|---------|
| | | Name | Numbers |
| 1 | Total area of the play grounds | 3,35,555 Sq, ft | 1 |
| 2 | Details of outdoor games available | Foot Ball | 3 |
| | | Hockey | 1 |
| | | Basket Ball | 3 |
| | | Cricket | 1 |
| | | Volley Ball | 2 |
| | | Kabadi | 1 |
| | | Kho-Kho | 1 |
| | | Ball Badminton | 2 |
| | | Track (400 Meters, 8 lanes) | 1 |
| | | Hand Ball | 1 |
| | Tennis | 2 | |
| 3 | Details of the indoor games available | Shuttle Badminton | 3 |
| | | Table tennis | 3 |
| | | Chess | 10 |
| | | Volley Ball | 1 |
| | | Basket Ball | 1 |
| 4 | Details of gymnasium available | 16 station multi gym | 1 |
| | | Abdomen conditioner with ladder | 2 |
| | | Adjustable sit up board | 1 |
| | | Belt vibrator (heavy duty) | 1 |
| | | Bench press | 1 |
| | | Chest press | 1 |
| | | Crossover machine | 1 |
| | | Elliptical cross trainer | 3 |
| | | Exercise cycle gym modal | 3 |
| | | Manual tread mill | 3 |
| | | Olympic weight bench | 1 |
| | | Power station with leg press | 1 |
| | | Rowing machine | 1 |
| | | Twister double (sitting & standing) | 1 |
| Upright cycle | 3 | | |

Other facilities

The University has separate hostel facilities for both boys and girls and a guest house with 30 air conditioned rooms including 4 VIP suites is also available.

The University provides adequate transport facilities for all students and staff members from nearby cities and also within the campus for girls students from hostels.

- Health Care Centre
- Bank with ATM facility
- Post Office
- Mineral Water Plant
- Waste Water Treatment plant
- Xerox and FAX centre
- Stationary shop
- Book Store
- Three Girls Hostels, 3 Boys Hostels and 1 PG Hostel
- Staff Quarters
- Guest House
- Canteen
- Parking stands for both Two and Four Wheelers
- Coin Telephone booths
- Beauty Clinic / Saloon

Bank, Post Office, Estate maintenance, Courier service, NCC office and Beauty clinic/saloon are housed in a single complex. All the buildings are provided with intercom facilities. Internet and intranet facilities are also available in all the buildings.



Bank with ATM



Post Office